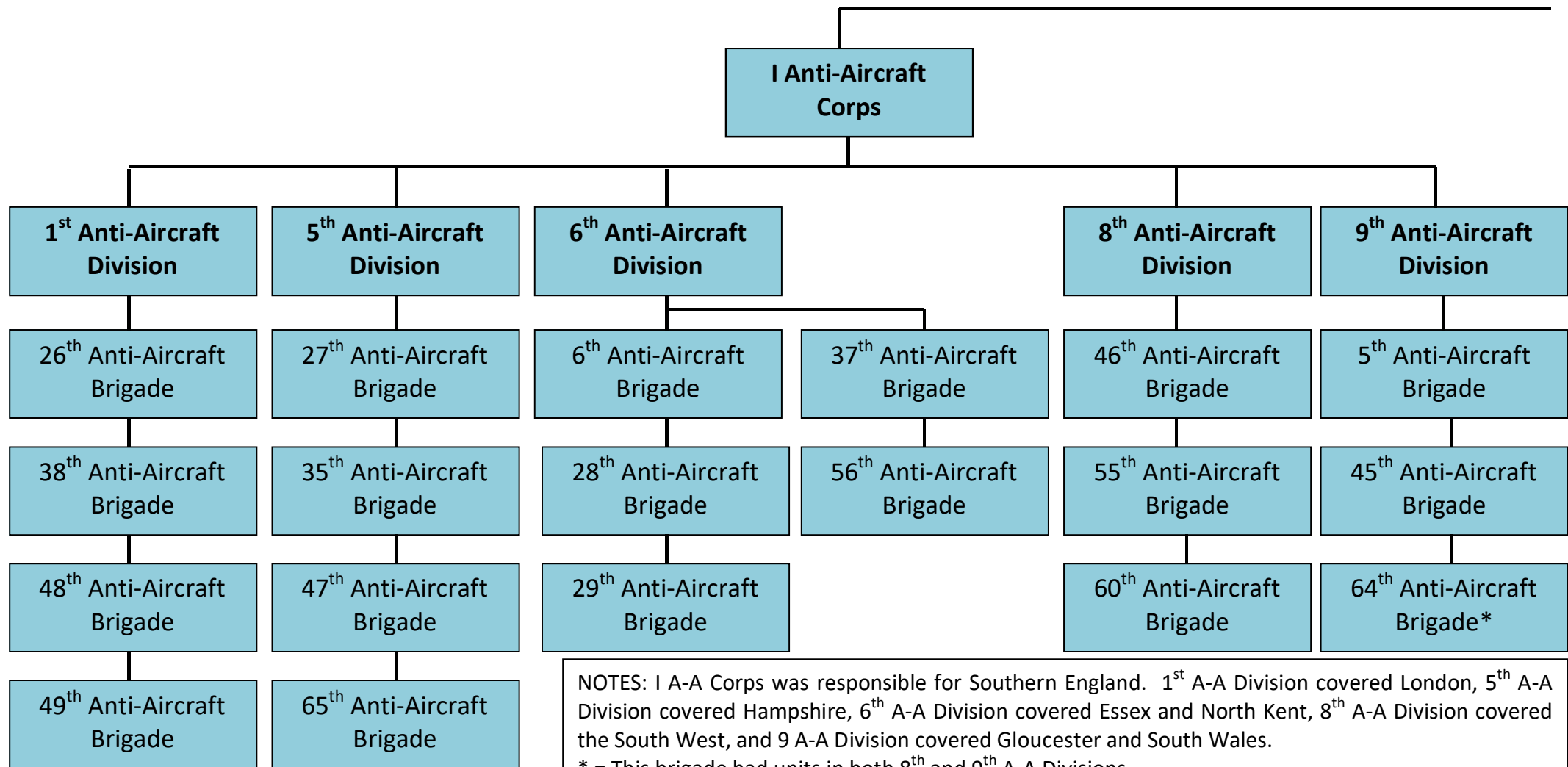


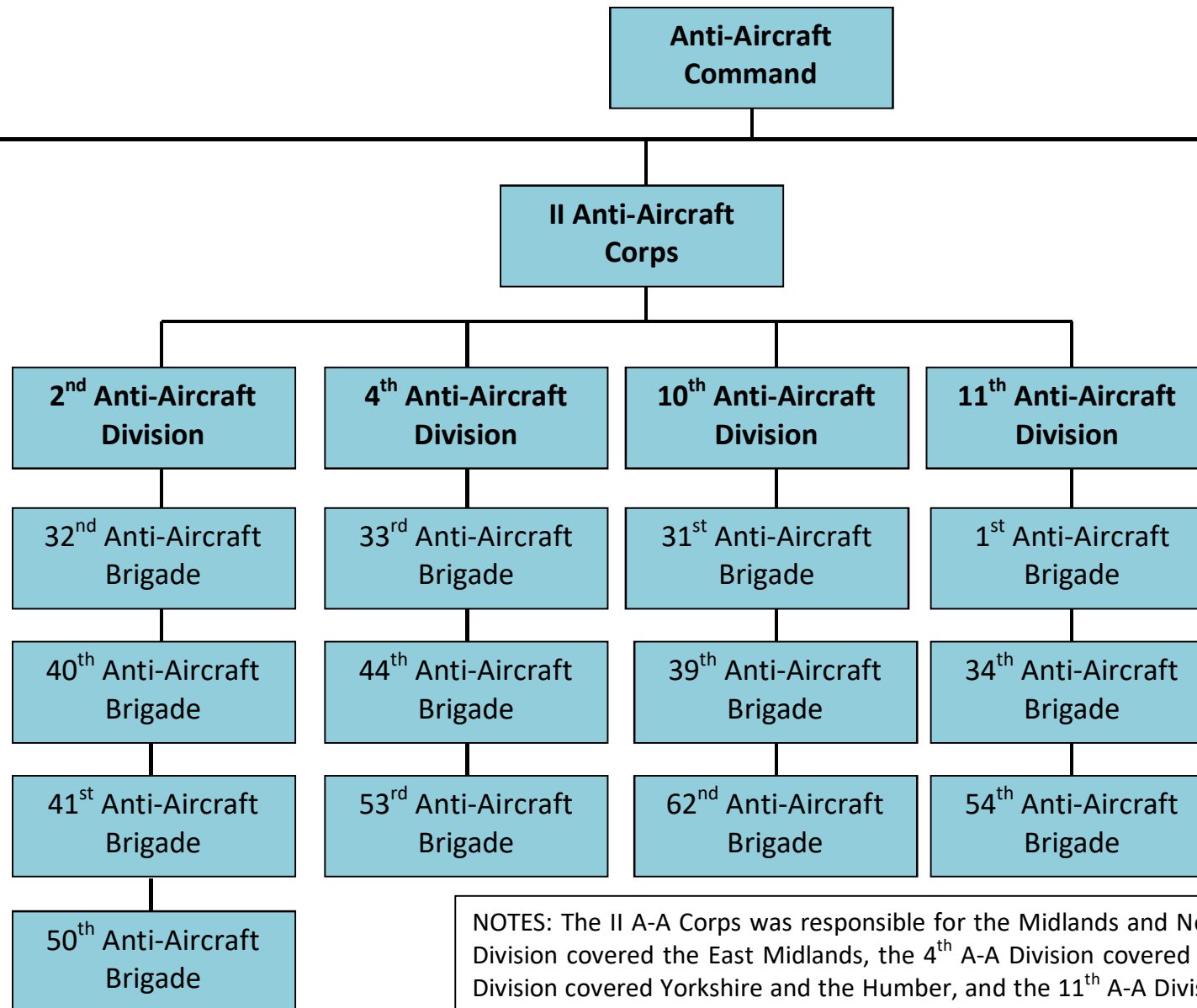
Command Structure

As at February 1941

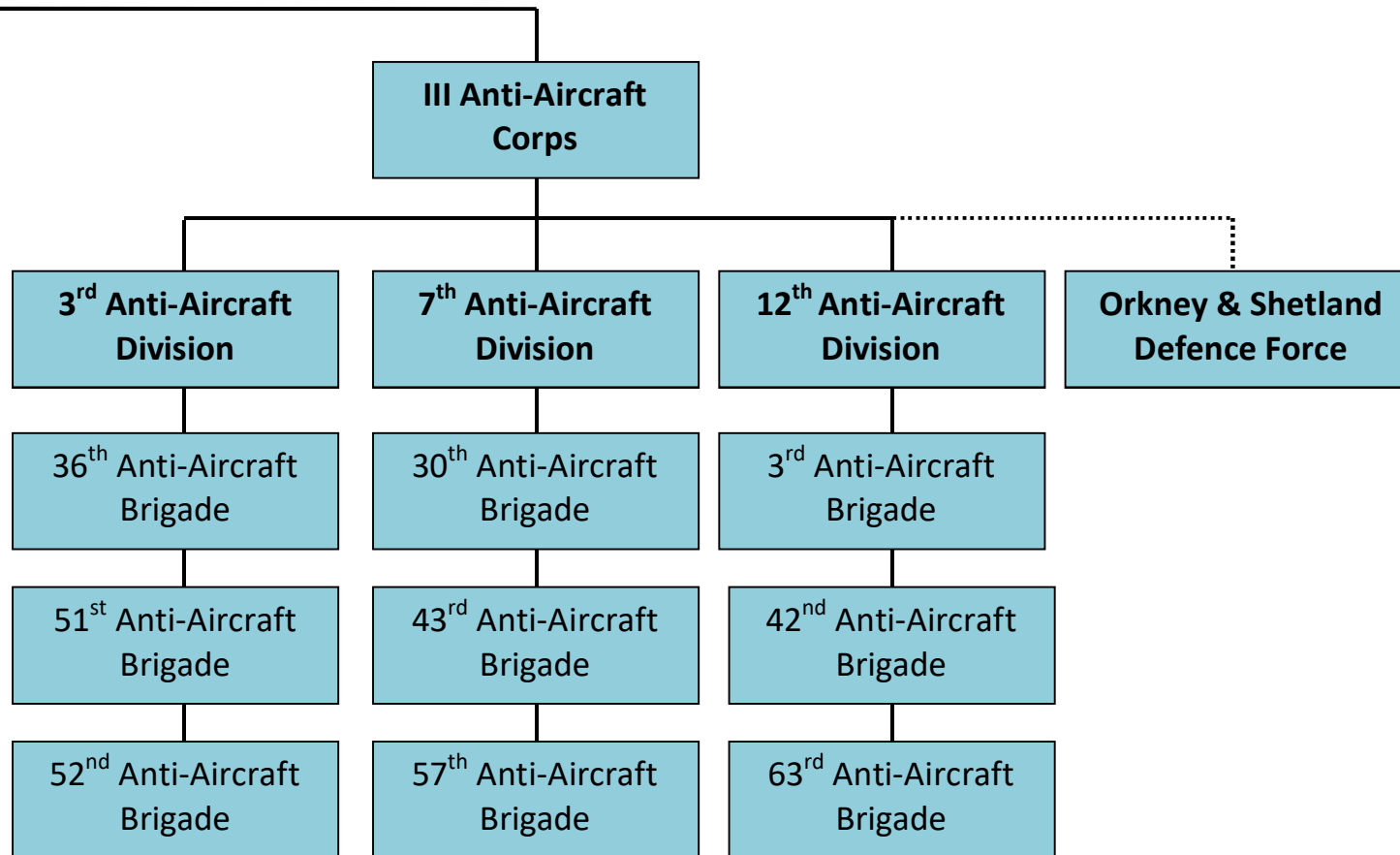


NOTES: I A-A Corps was responsible for Southern England. 1st A-A Division covered London, 5th A-A Division covered Hampshire, 6th A-A Division covered Essex and North Kent, 8th A-A Division covered the South West, and 9 A-A Division covered Gloucester and South Wales.

* = This brigade had units in both 8th and 9th A-A Divisions.



NOTES: The II A-A Corps was responsible for the Midlands and Northern England. The 2nd A-A Division covered the East Midlands, the 4th A-A Division covered the North West, the 10th A-A Division covered Yorkshire and the Humber, and the 11th A-A Division covered Birmingham and Staffordshire.



NOTES: III A-A Corps covered North East England, Scotland and Northern Ireland. The 3rd A-A Division covered Eastern Scotland, the 7th A-A Division covered the North East of England, and the 12th A-A Brigade covered West Scotland and Northern Ireland.